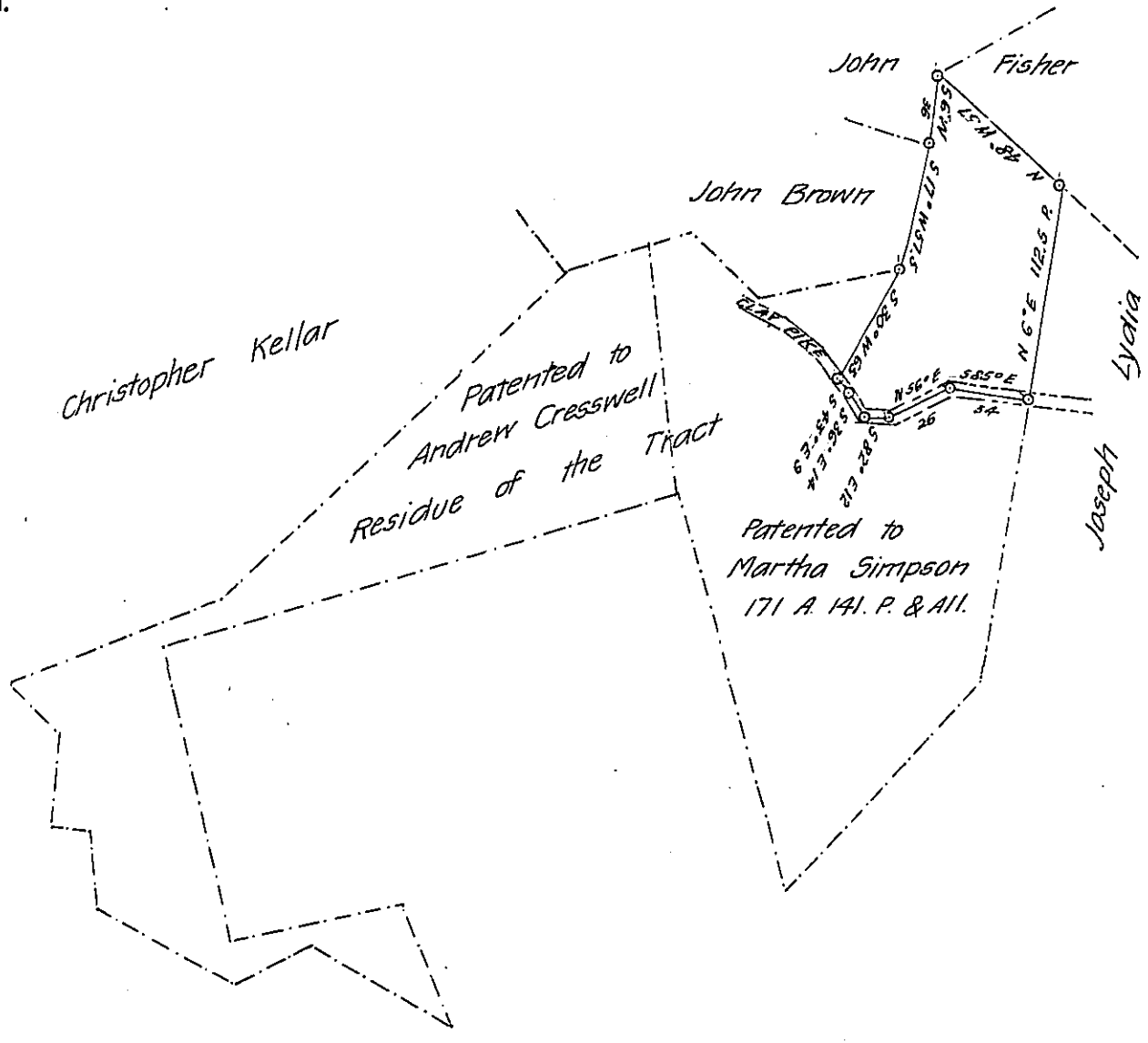


FORM NO 1.



A DRAFT of a tract of land situated in the Township of Pine and County of Indiana containing forty seven acres 60.6 perches and allowance of six per cent for roads etc. Surveyed for Christopher Kellar Jr., R. N. McFeaters & Philip Rice the 19th day of June 1901 it being part of a larger tract containing four hundred and thirty seven acres, ~~perches~~ and allowance, originally surveyed in pursuance of a warrant granted to Wm. & Alexander Patterson dated the 19th day of January 1838

D. L. Moorhead

To James W. Latta, Esq.,

County Surveyor

Secretary of Internal Affairs.

IN TESTIMONY that the above is a copy of the original remaining on file in the Department of Internal Affairs of Pennsylvania, made conformably to an Act of Assembly approved the 16th day of February, 1833, I have hereunto set my Hand and caused the Seal of said Department to be affixed at Harrisburg, this twenty second day of January 1908

*Henry Howch*  
Secretary of Internal Affairs.